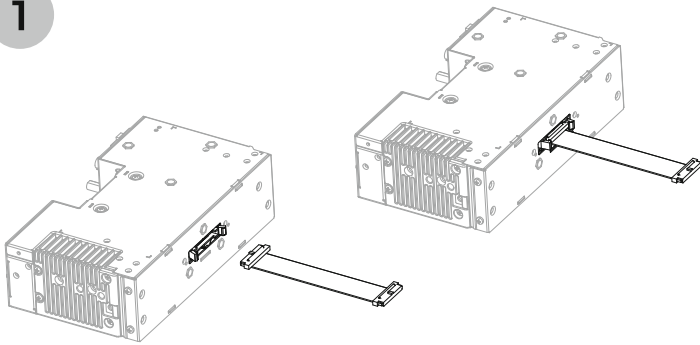


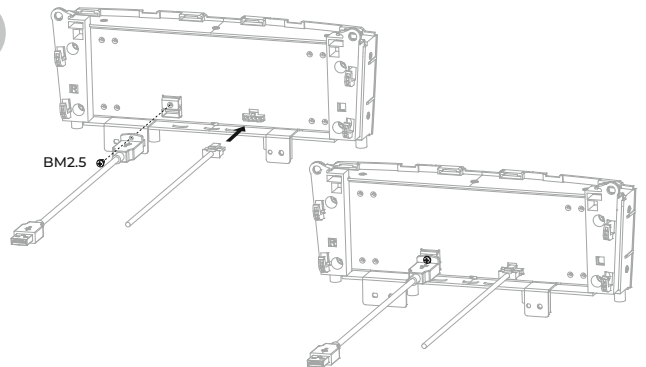
W204 Assembly Instruction

1



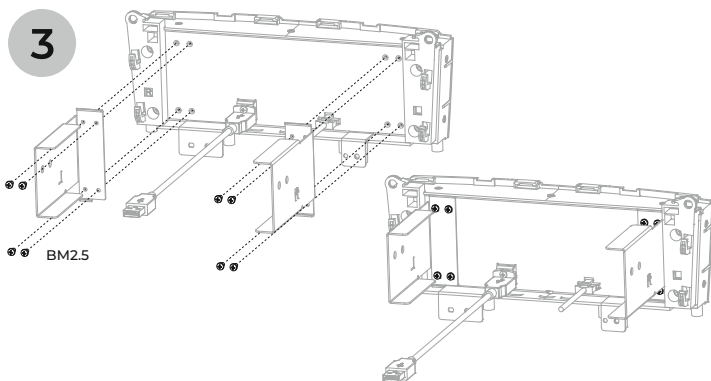
Connect the connection cable to the main unit

2



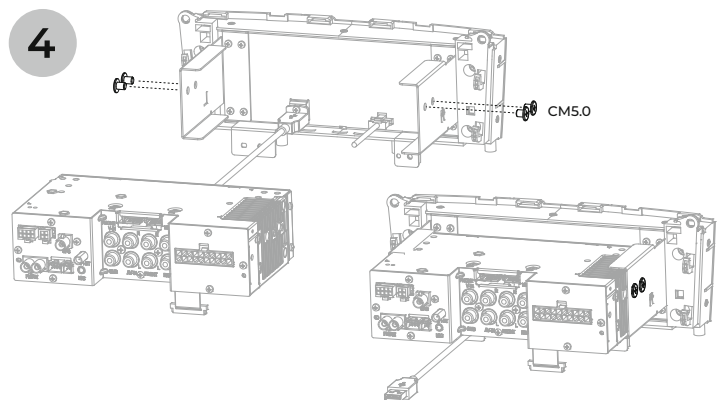
Connect the connection cables to the
Dynavin control panel

3



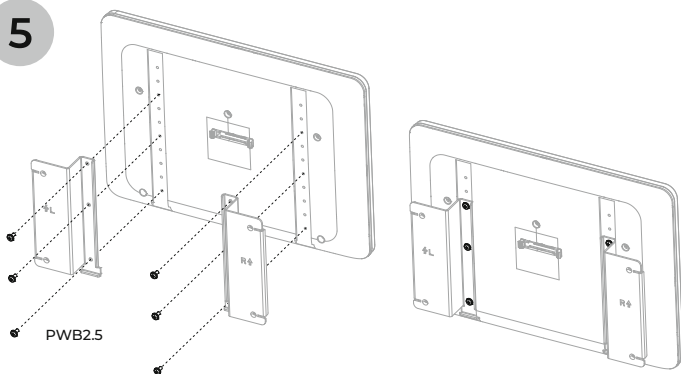
Put the Dynavin control panel and
mounting brackets together

4



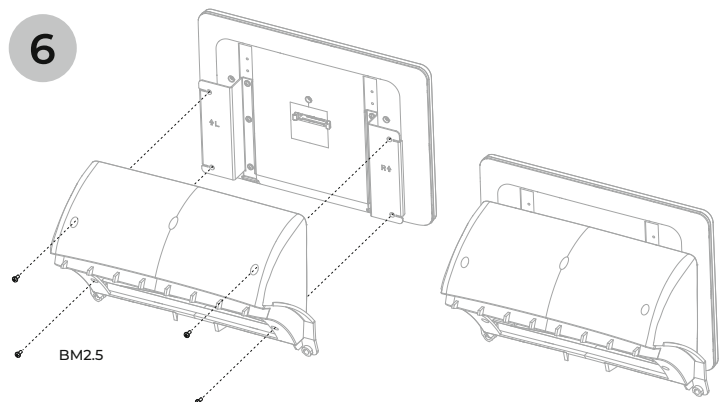
Put the main unit and Dynavin control panel together

5



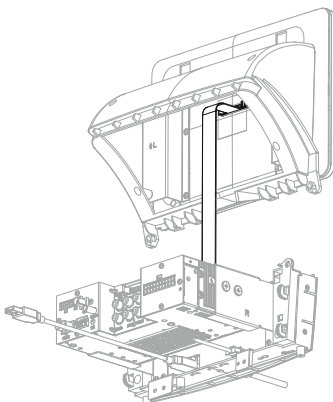
Put the display and mounting brackets together

6



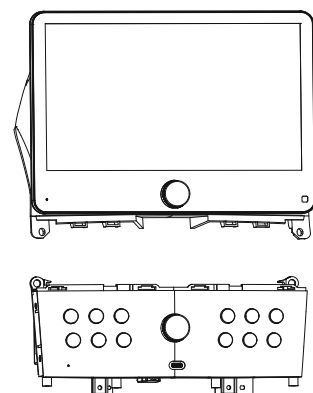
Put the plastic frame and display together

7



Connect the connection cable to the display

8



Installation complete