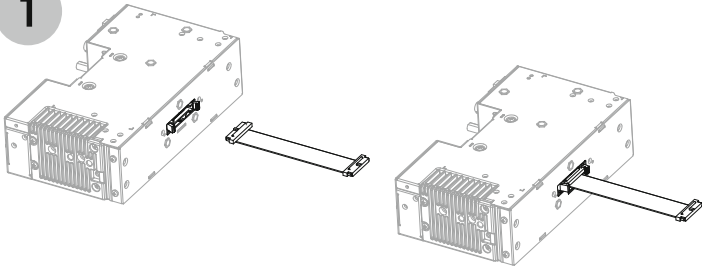


RNCL5 Assembly Instruction

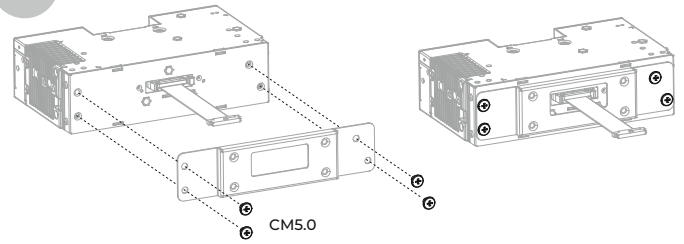
For vehicle with LCD display

1



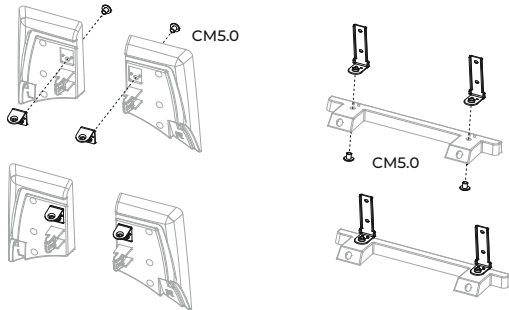
Connect the connection cable to the main unit

2

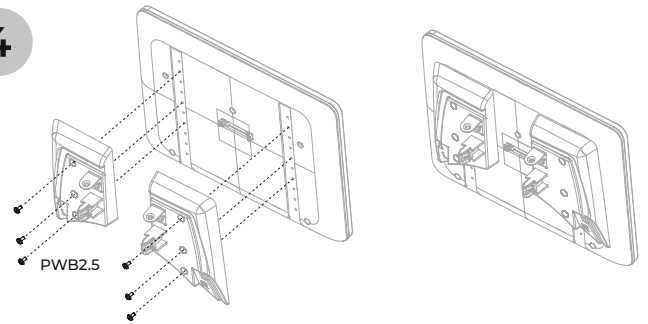


Put the main unit and the metal plate together

3

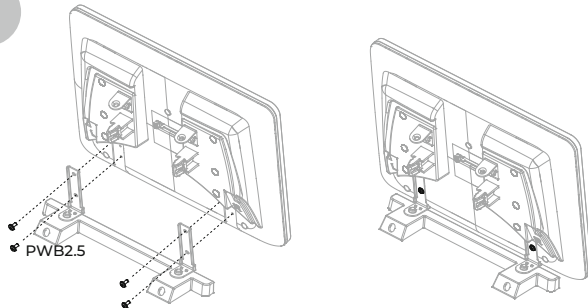


4

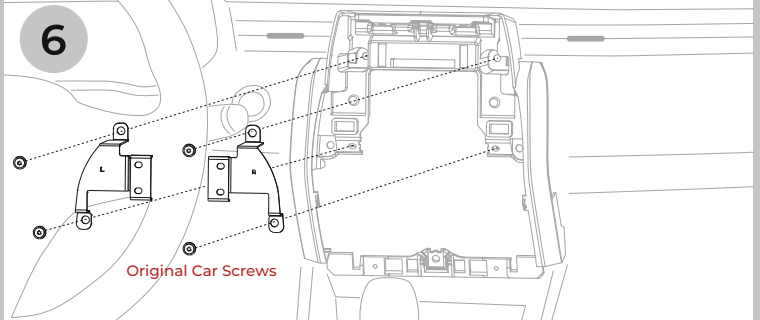


Put the display and the display holder together

5

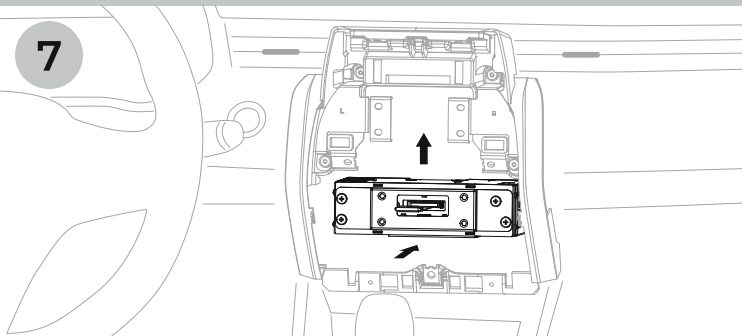


6



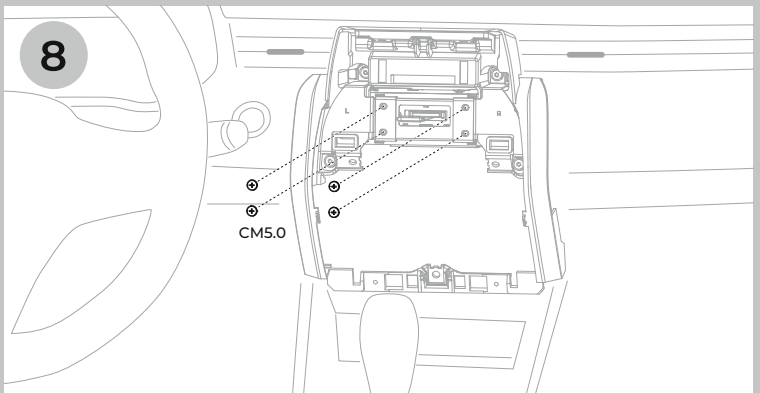
Put the mounting plates and the original bezel together

7

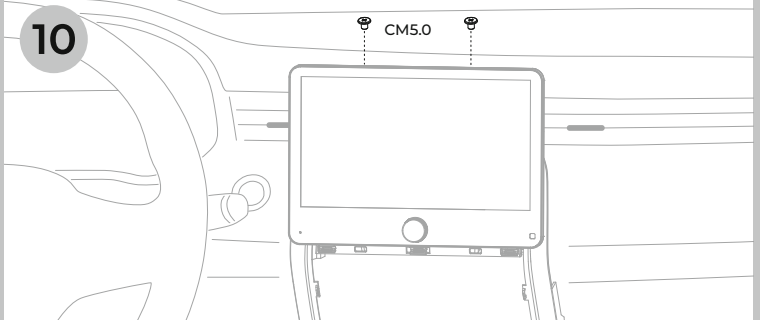


Put the main unit and the original bezel together

8

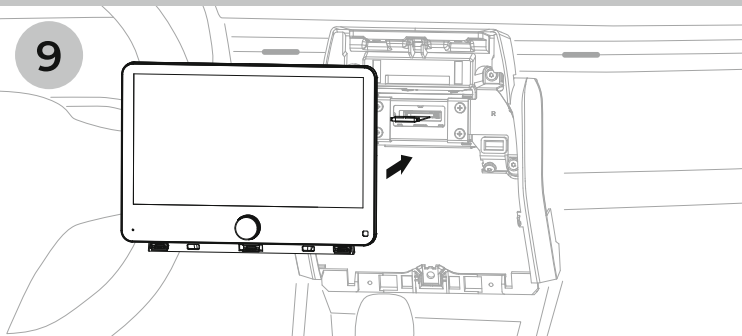


10



Fix the display to finish installation

9



Connect the connection cable to the display